

MFOS2

italian elegance
for doors & windows

METALFORM™



The MFOS2 family systems are characterised by an elegant solution for the relationship between the transparency of the glass and the lightness of solid precious metal frames; for efficiency, versatility and beauty of doors and windows; for the merging of technological innovation and detailed craftsmanship.

MFOS2 75

MFOS2 75 is the thermally broken system belonging to the OS2 family. The profiles, with visible sections ranging from 27 to 62 mm, house glazing up to 50 mm and allow for many variants in differentiating facade arrangements and opening types, even with a tilt and turn.

MFOS2 65

Efficient and versatile, the thermally broken **MFOS2 65** has a depth of 65 mm to accommodate glazing up to 40 mm; with visible sections ranging from 27 to 62 mm. **MFOS2 65** is a system to design the desired door or window in detail with minimal sections and high performance features of the OS2 family.

MFOS2 BV

The OS2 thermally broken system in the **MFOS2 BV** variant, with the same bevelled corner moulding on the outside of the sash and in the glazing bead. Perfect symmetry between inside and outside, with the glass aligned with the section of the frame and the performance characteristics of the OS2 family.

p 06 p 78



p 16 p 84



p 26 p 90



MFOS2 AS

The **MFOS2 AS** thermally broken system allows to produce lift-and-slide doors, with a floor-level threshold, in perfect continuity with OS2 75, 65 and LB windows and doors. A complete set of special profiles that correspond to the features of the OS2 family.

MFOS2 LB

The thermally broken **MFOS2 LB** system integrates the free opening in the windows and doors of the OS2 family, with the same high-performance and minute profiles. The sashes up to 100 x 290 cm rotate and slide with reduced dimensions on concealed hinges and rails; the profiles have constant sections along the entire perimeter of the frame.

MFOS2 40

MFOS2 40 is the system with tubular profiles of the OS2 family. The highest quality focuses on a system reduced to the essentials, with a depth of 40 mm and visible sections ranging from 12 to 62 mm. Ideal for implementing lightweight frames for interior design projects, with glazing partitions that reproduce the same design of the windows and doors.

p 36 p 96



p 46 p 102



p 56 p 108







MFOS2 75

With its solid and precious lightness, MFOS2 75 makes the merging of technological innovation and detailed craftsmanship perfect. Offering a vast variety of different kinds of openings and an infinite possibility of façade arrangements, minimal sections and high performance characteristics, materials and impeccable finishings.



MFOS2 75

you can freely compile over
40 profiles, with visible sections
ranging from 27 to 62 mm,
depths ranging from 70 to
84 mm, glazing up to 50 mm,
also with tilt and turn opening

maximum achievable performance

wind resistance - test pressure	5
wind resistance - frame bending	C
water tightness	9A
acoustic performance (with R_w per IGU 42dB)	45 dB
thermal transmittance (with U_g glass 0,7 W/m ² K)	1,04 W/m ² K
air permeability	4



1 glazing bead

2 glazing slot
up to 50 mm

3 internal and
external overlap

4 hardware groove

5 internal
rebate gasket

6 external
rebate gasket

7 central
flipper gasket

composite structural
thermal break

8 polyurethane

9 polyamide



MFO52 75 external view blackened stainless steel

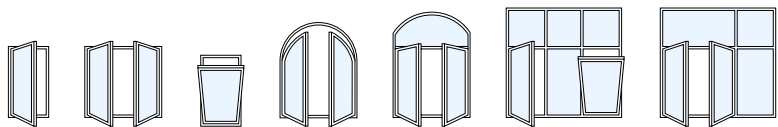


0 10 20 30 40 50

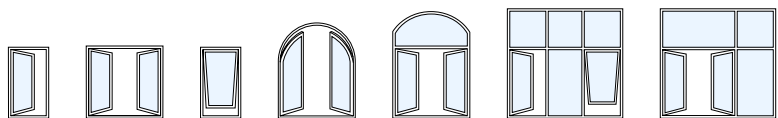
MFOS2 75 internal view blackened stainless steel

MFOS2 75 type of opening

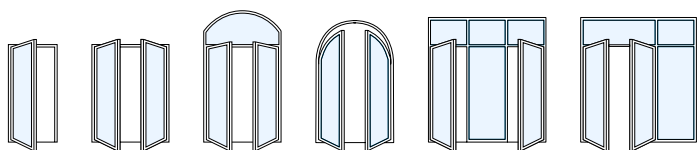
window
inward
opening
tilt & turn
mechanism



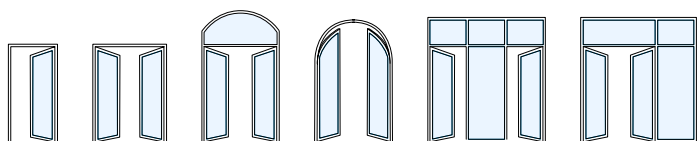
window
outward
opening



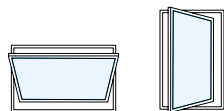
door
inward
opening



door
outward
opening



door and
window
pivoting
opening

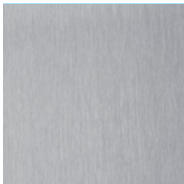


MFOS2 75 materials

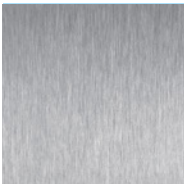
stainless
steel



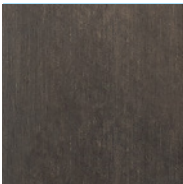
polished 316L
stainless steel



scotch brite 316L
stainless steel



satin-finished 304
stainless steel



blackened 316L
stainless steel

galvanised
steel



painted
galvanised steel

corten
steel



oxidised
corten steel

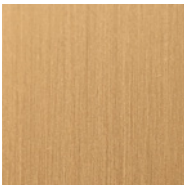


waxed oxidised
corten steel

brass



patinated
OT67 brass



satin-finished
OT67 brass





- system MFOS2 75
- material corten steel
- design Studiomas with Heinz Tesar
- office Due C Group srl
- location Treviso - Italy

MFOS2 65

MFOS2 65 is an efficient and versatile system to design the desired door or window in detail with the minimum sections and the high performance features of the MFOS2 family. The minimal profiles are carefully designed so that, each line and each bend are essential to obtain the maximum level transparency and pureness, as well as excellent thermal and acoustic insulation.



MFOS2 65

the visible sections ranging from 27 to 62 mm are the features of the system, the thickness of the frame ranges from 58 to 72 mm, for glazing up to 40 mm.

Many variants entail casements and fixed elements

maximum achievable performance

wind resistance - test pressure	4
wind resistance - frame bending	C
water tightness	8A
acoustic performance (with R_w per IGU 42dB)	43 (-1;-4) dB
thermal transmittance (with U_g glass 0,7 W/m ² K)	1,38 W/m ² K
air permeability	4



- 1 glazing bead
- 2 glazing slot
up to 40 mm
- 3 internal and
external overlap
- 4 internal
rebate gasket
- 5 external
rebate gasket
- 6 central
flipper gasket
- composite structural
thermal break
- 7 polyurethane
- 8 polyamide



MFOS2 65 external view corten steel

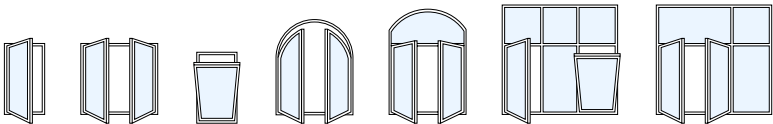


0 10 20 30 40 50

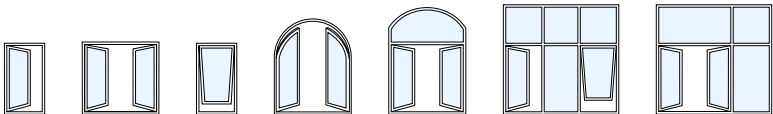
MFOS2 65 internal view corten steel

MFOS2 65 type of opening

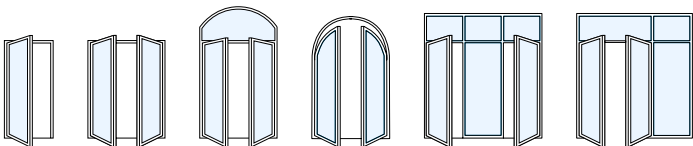
window
inward
opening
tilt & turn
mechanism



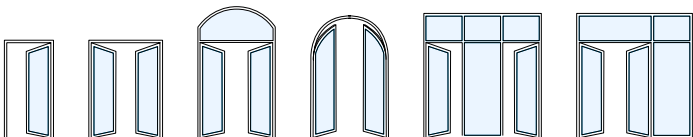
window
outward
opening



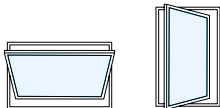
door
inward
opening



door
outward
opening



door and
window
pivoting
opening



MFOS2 65 materials

stainless
steel



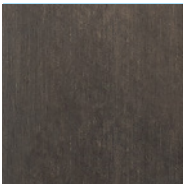
polished 316L
stainless steel



scotch brite 316L
stainless steel



satin-finished 304
stainless steel



blackened 316L
stainless steel

galvanised
steel



painted
galvanised steel

corten
steel



oxidised
corten steel



waxed oxidised
corten steel

brass



patinated
OT67 brass



satin-finished
OT67 brass

MFOS2 65 Fondaco dei Tedeschi, Venice





system MFOS2 65

material natural brass

design OMA Rem Koolhaas

office Gualini spa

location Venice - Italy

MFOS2 BV

MFOS2 BV has been designed to manufacture windows and doors that have the same moulding on the inside as well as the outside, maintaining the innovative technology and high-level performance features of MFOS2 systems.

The beveled angled shapes of the sash externally and the glazing bead internally are symmetrical with respect to the glass, perfectly centered on the frame, hence characterizing the frame by giving the external elevation the same depth and aesthetics of the internal one.

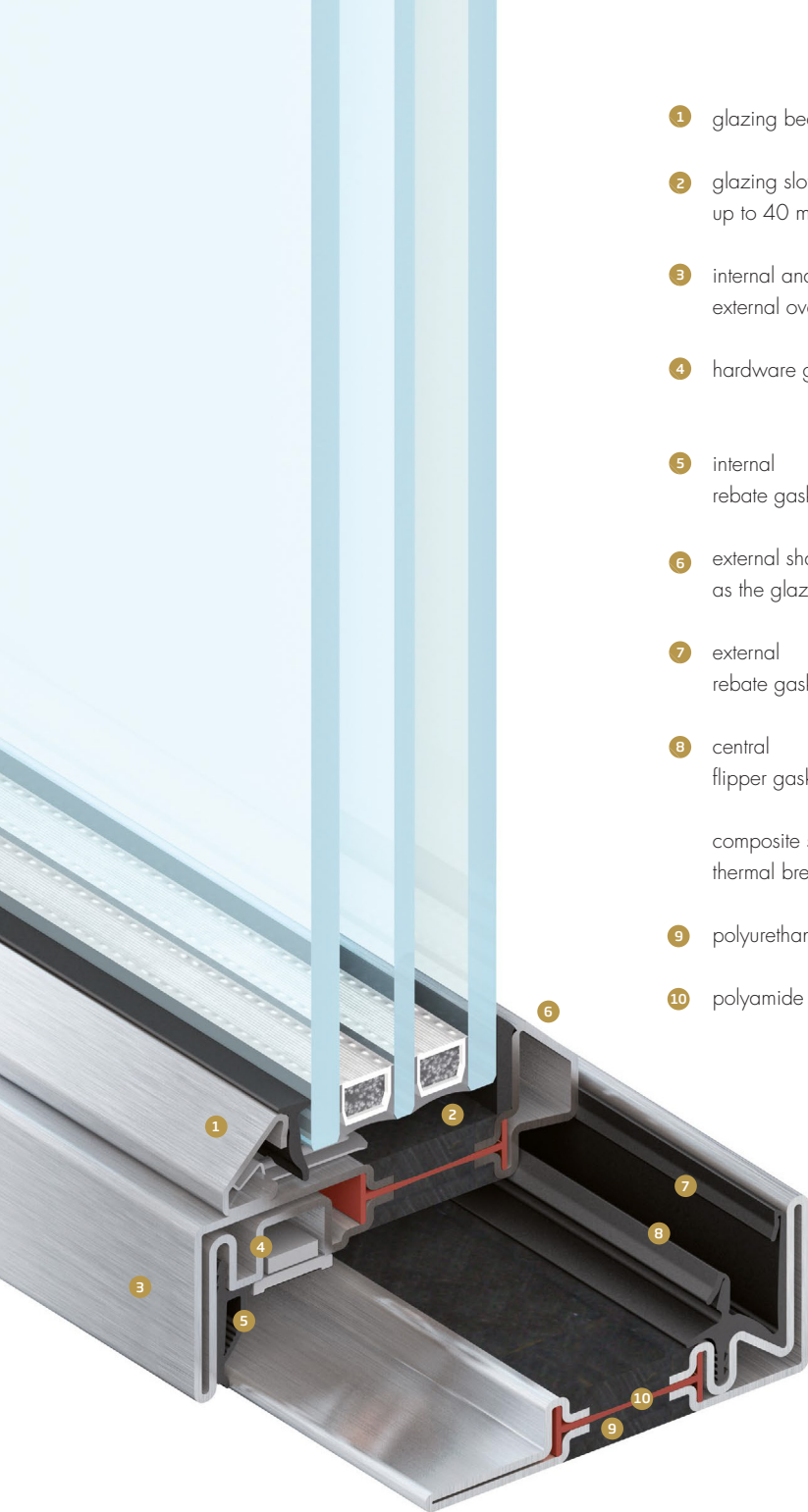


MFOS2 BV

in the BV variant of MFOS2 with a symmetrical moulding on the inside and the inside of the frame, the visible sections range from 27 to 62 mm, the thickness varies based on the type of opening, from 70 to 84 mm, with glazing up to 40 mm

maximum achievable performance

wind resistance - test pressure	5
wind resistance - frame bending	C
water tightness	9A
acoustic performance (with R_w per IGU 42dB)	45 dB
thermal transmittance (with U_g glass 0,7 W/m ² K)	1,04 W/m ² K
air permeability	4



- 1 glazing bead
- 2 glazing slot
up to 40 mm
- 3 internal and
external overlap
- 4 hardware groove
- 5 internal
rebate gasket
- 6 external shape
as the glazing bead
- 7 external
rebate gasket
- 8 central
flipper gasket
- composite structural
thermal break
- 9 polyurethane
- 10 polyamide



MFOS2 BV external view corten steel

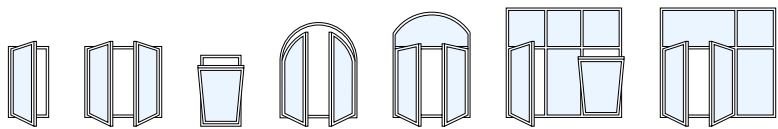


0 10 20 30 40 50

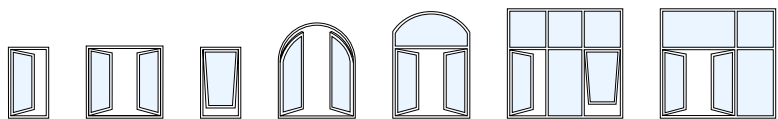
MFOS2 BV internal view corten steel

MFOS2 BV type of opening

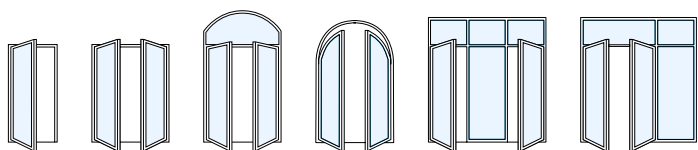
window
inward
opening
tilt & turn
mechanism



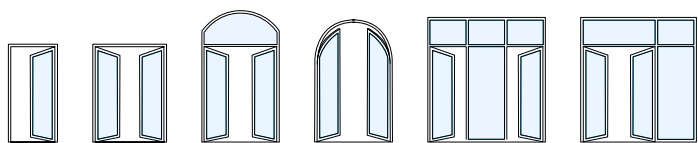
window
outward
opening



door
inward
opening



door
outward
opening

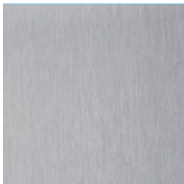


MFOS2 BV materials

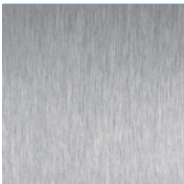
stainless
steel



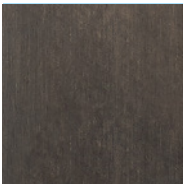
polished 316L
stainless steel



scotch brite 316L
stainless steel



satin-finished 304
stainless steel



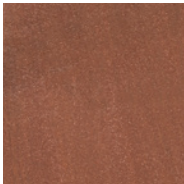
blackened 316L
stainless steel

galvanised
steel



painted
galvanised steel

corten
steel



oxidised
corten steel

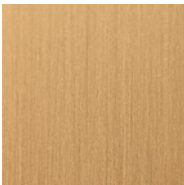


waxed oxidised
corten steel

brass



patinated
OT67 brass



satin-finished
OT67 brass





system MF052 BV

material painted galvanised steel

design Petra and Paul Kahlfeldt

office Jens Schröter Metallbau GmbH

location Berlin - Germany

MFOS2 AS

The elegant sashes are integrated into a lift-and-slide door system, enhancing the facades just as much as the interior spaces. With the same minute and performant profiles, MFOS2 AS fits into the composition of facade arrangements in continuity with the system MFOS2 75, 65 and LB, maintaining aesthetic and performance features thanks to a set of dedicated components, specifically designed for the lift-and-slide technology.



MFOS2 AS

MFOS2 AS integrates the lift and slide sashes into the MFOS2 system with perfect continuity; ranging from 27 to 62 mm for visible sections, depths ranging from 70 to 84 mm, glazing up to 50 mm

maximum achievable performance

wind resistance - test pressure	3
wind resistance - frame bending	B
water tightness	5A
thermal transmittance (with Ug glass 0,7 W/m2K)	1,1 W/m2K
air permeability	4



1 equal visible section
on all 4 sides

2 glazing slot
up to 50 mm

3 integrated slot
for roller assembly

4 double gasket

5 threshold profile
with integrated water
drainage system

composite structural
thermal break

6 polyurethane

7 polyamide



MFOS2 AS external view patinated brass

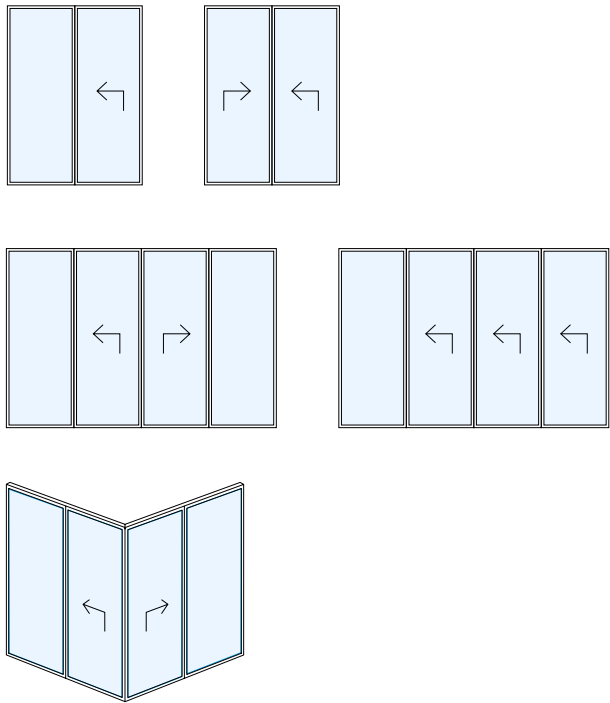


0 10 20 30 40 50

MFOS2 AS internal view patinated brass

MFOS2 AS type of opening

lift-and-slide
door

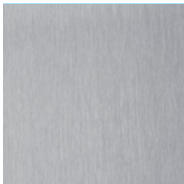


MFOS2 AS materials

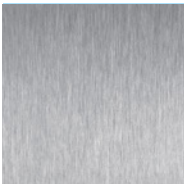
stainless
steel



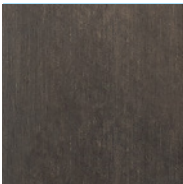
polished 316L
stainless steel



scotch brite 316L
stainless steel



satin-finished 304
stainless steel



blackened 316L
stainless steel

galvanised
steel



painted
galvanised steel

corten
steel



oxidised
corten steel

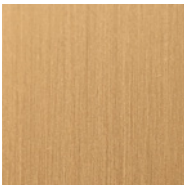


waxed oxidised
corten steel

brass



patinated
OT67 brass



satin-finished
OT67 brass

MFOS2 AS Courtyard House, California





system MFOS2 AS, EBE 65

material galvanised steel 'patinated black'

design Ken Linsteadt Architects

office Jada Windows

location California - USA

MFOS2 LB

MFOS2 LB integrates the free opening in the MFOS2 family, in continuity with the minute characteristic profiles of the system: both with the reduced visible profiles, constant for the entire perimeter of the frame, as well as the excellent performance. By turning on the minimal hinges and sliding on the concealed rails, the folding sashes are fall one onto another or assume varying orientations, compressing and expanding the interior space.

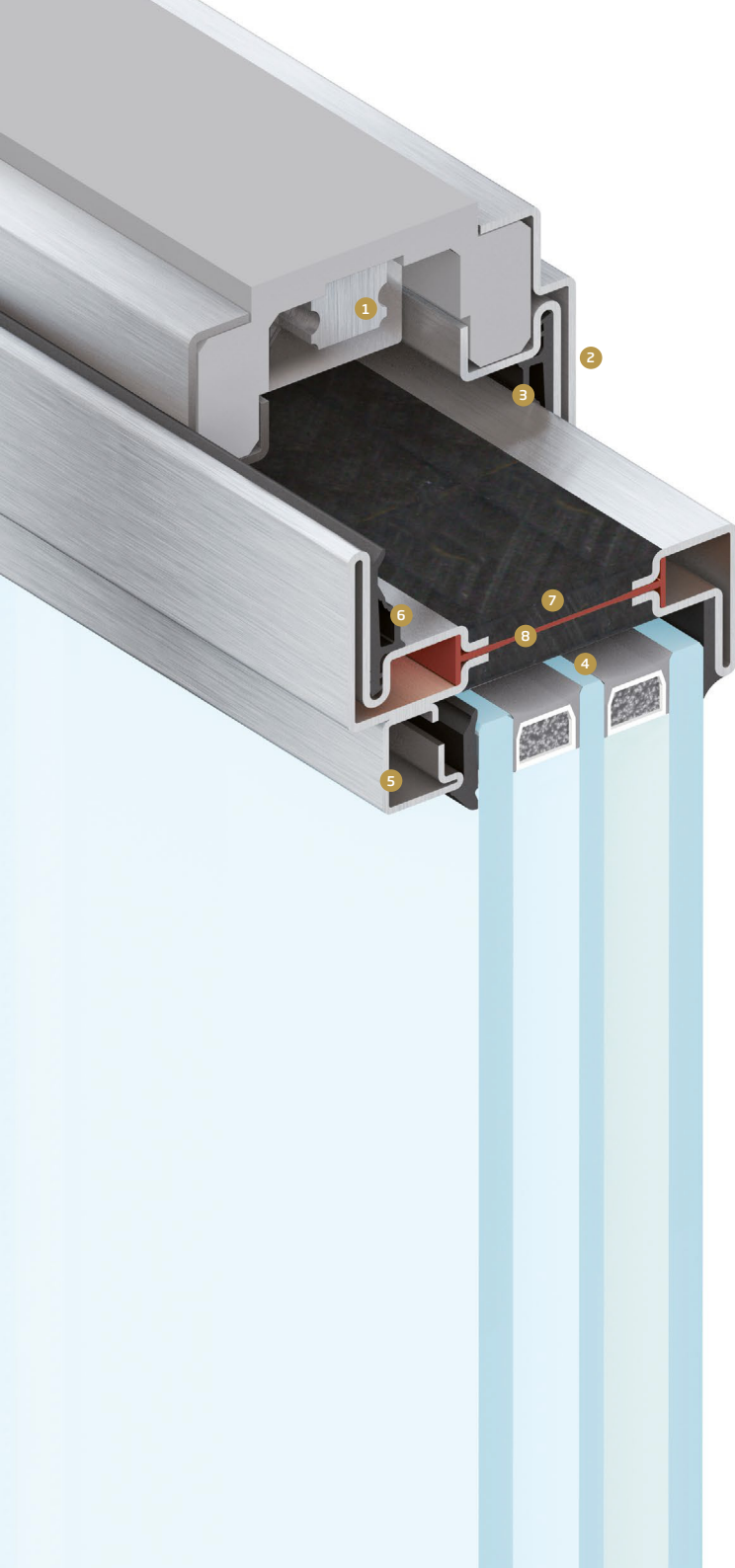


MFOS2 LB

the folding sashes have dimensions up to 100 x 290 cm, with a visible section ranging from 27 to 62 mm, depths from 70 to 84 mm, and glazing up to 50 mm. The top and bottom rails are fully concealed behind closed doors

maximum achievable performance

wind resistance - test pressure	3
wind resistance - frame bending	C
water tightness	5A
thermal transmittance (with Ug glass 0,7 W/m2K)	1,3 W/m2K
air permeability	4



1 steel rail

2 internal and
external overlap

3 external
rebate gasket

4 glazing slot
up to 50 mm

5 glazing bead

6 internal
rebate gasket

composite structural
thermal break

7 polyurethane

8 polyamide

MFOS2 LB

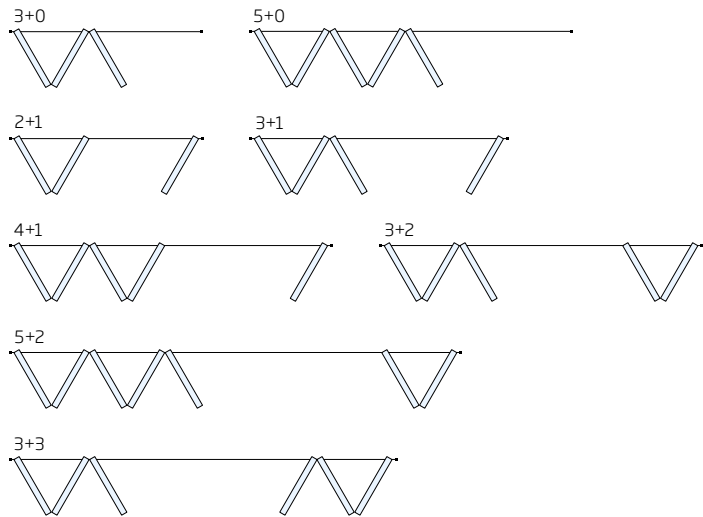




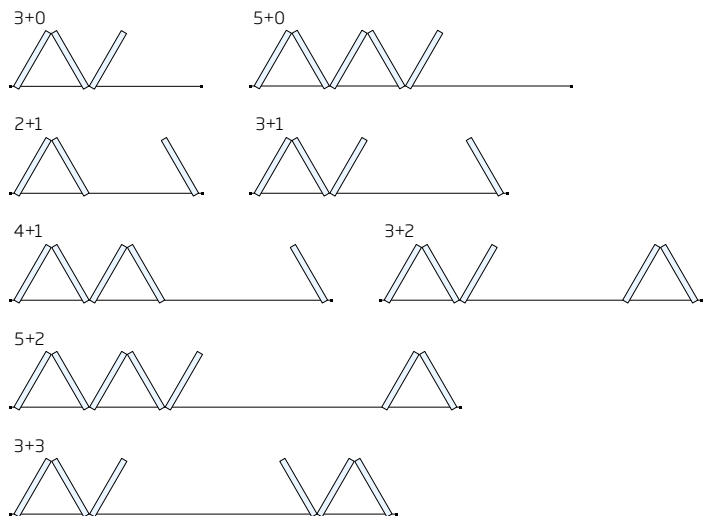
MFOS2 LB opening detail corten steel

MFOS2 LB type of opening

door and
window
inward
opening



door and
window
outward
opening

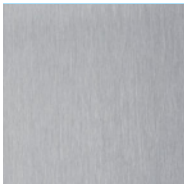


MFOS2 LB materials

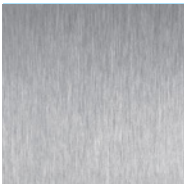
stainless
steel



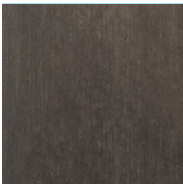
polished 316L
stainless steel



scotch brite 316L
stainless steel



satin-finished 304
stainless steel



blackened 316L
stainless steel

galvanised
steel



painted
galvanised steel

corten
steel



oxidised
corten steel



waxed oxidised
corten steel

brass



patinated
OT67 brass



satin-finished
OT67 brass

MFOS2 LB Villa-Ranch, California





system MF0S2 LB

material galvanised steel 'patinated black'

design Backen, Gillam and Kroeger

office Jada Windows

location California - USA

MFOS2 40

The maximum quality in a system reduced to the essentials: MFOS2 40. Designed for interior design projects, the agile and lightweight tubular profiles reproduce the same image of the MFOS2 windows and doors in the glass partitions, creating an effect of continuity between interiors and the building envelope.

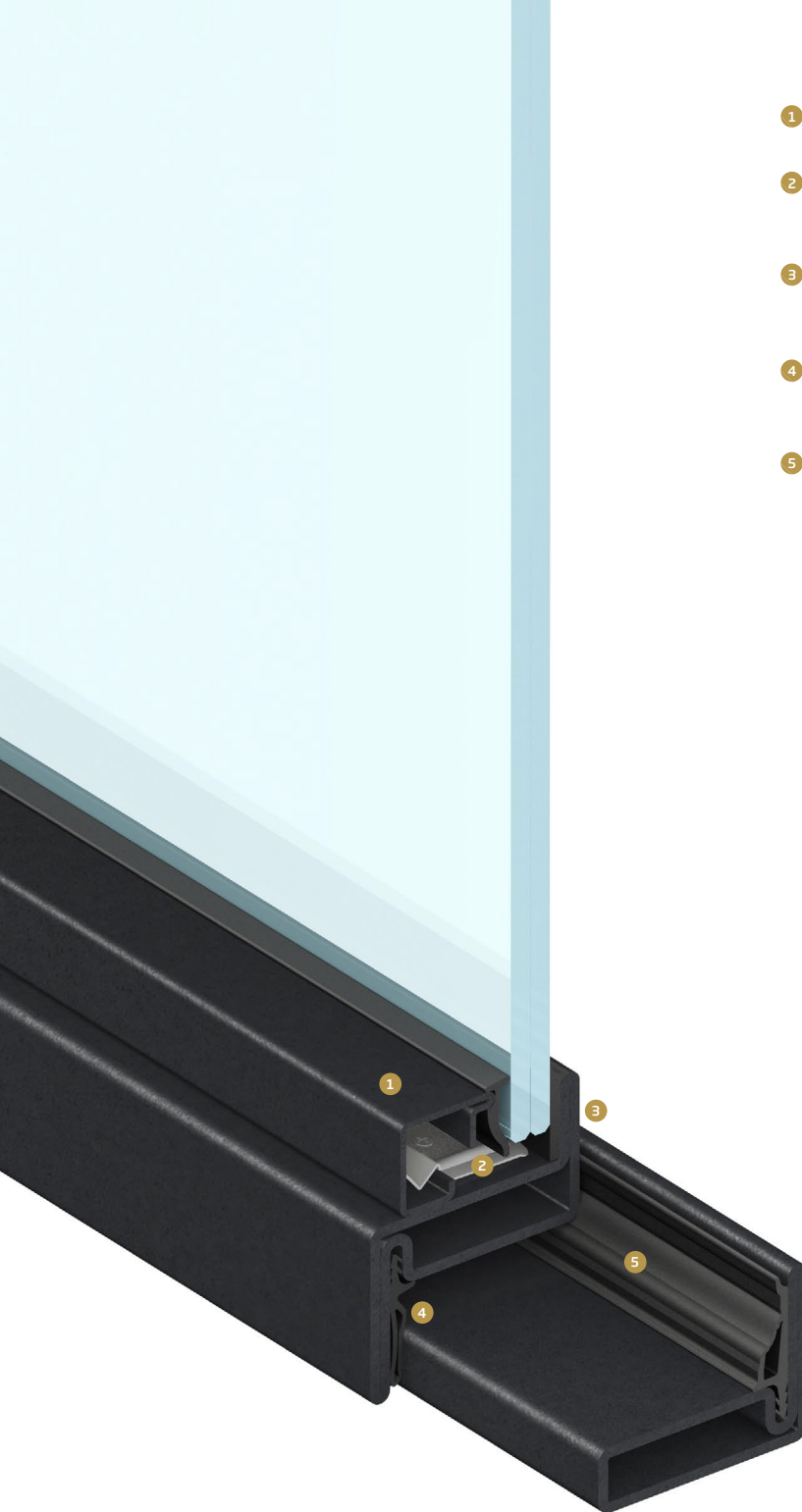


MFOS2 40

the visible sections range from 12 to 47 mm while the depth is reduced to 42 mm, for glazing up to 15 mm. MFOS2 40 is the ideal system for lightweight doors and window or internal partitions.

maximum achievable performance

wind resistance - test pressure	3
wind resistance - frame bending	C
water tightness	5A
thermal transmittance (with Ug glass 0,7 W/m2K)	1,3 W/m2K
air permeability	4



- 1 glazing bead
- 2 glazing slot
up to 28 mm
- 3 internal and
external overlap
- 4 internal
rebate gasket
- 5 external
rebate gasket



MFOS2 40 external view painted pickled steel

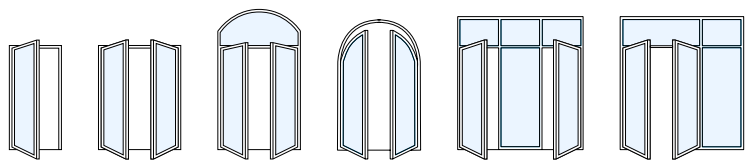


0 10 20 30 40 50

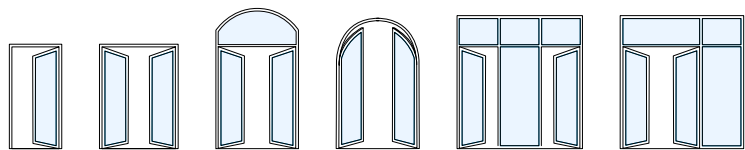
MFOS2 40 internal view painted pickled steel

MFOS2 40 type of opening

door
inward
opening



door
outward
opening



MFOS2 40 materials

pickled
steel



painted
pickled steel

MFOS2 40 Guest Pavilion, Sa Tuna





systems MF EBE 65, OS2 40

material corten steel and painted pickled steel

design his is Arquitectura

office Alumilux & Metall-lux

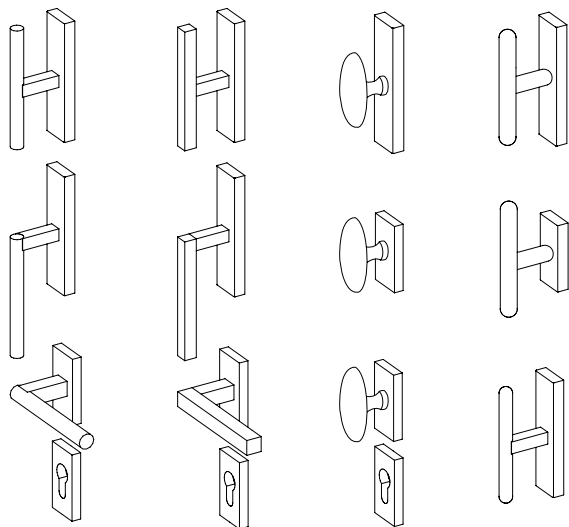
location Sa Tuna, Costa Brava - Spain





handles

elegant, discrete
complements, in harmony
with the essential lines
of the window and door,
in the same precious
materials and finishes



truncated

square

oval

rounded



glazing beads

the small profiles
in front of the glass to
secure it are themselves
design elements of
the casement that
make it unique



thin



gothic



triangular



rectangular



spindle



gothic
glazing
bead

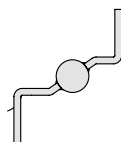


squared
glazing
bead

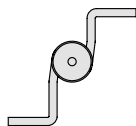


hinges

slim and light, hinges are both technological devices and plastic elements that make up the design of windows and doors, using the same precious metals



two-winged
Ø 12 mm



three-winged
Ø 15 mm

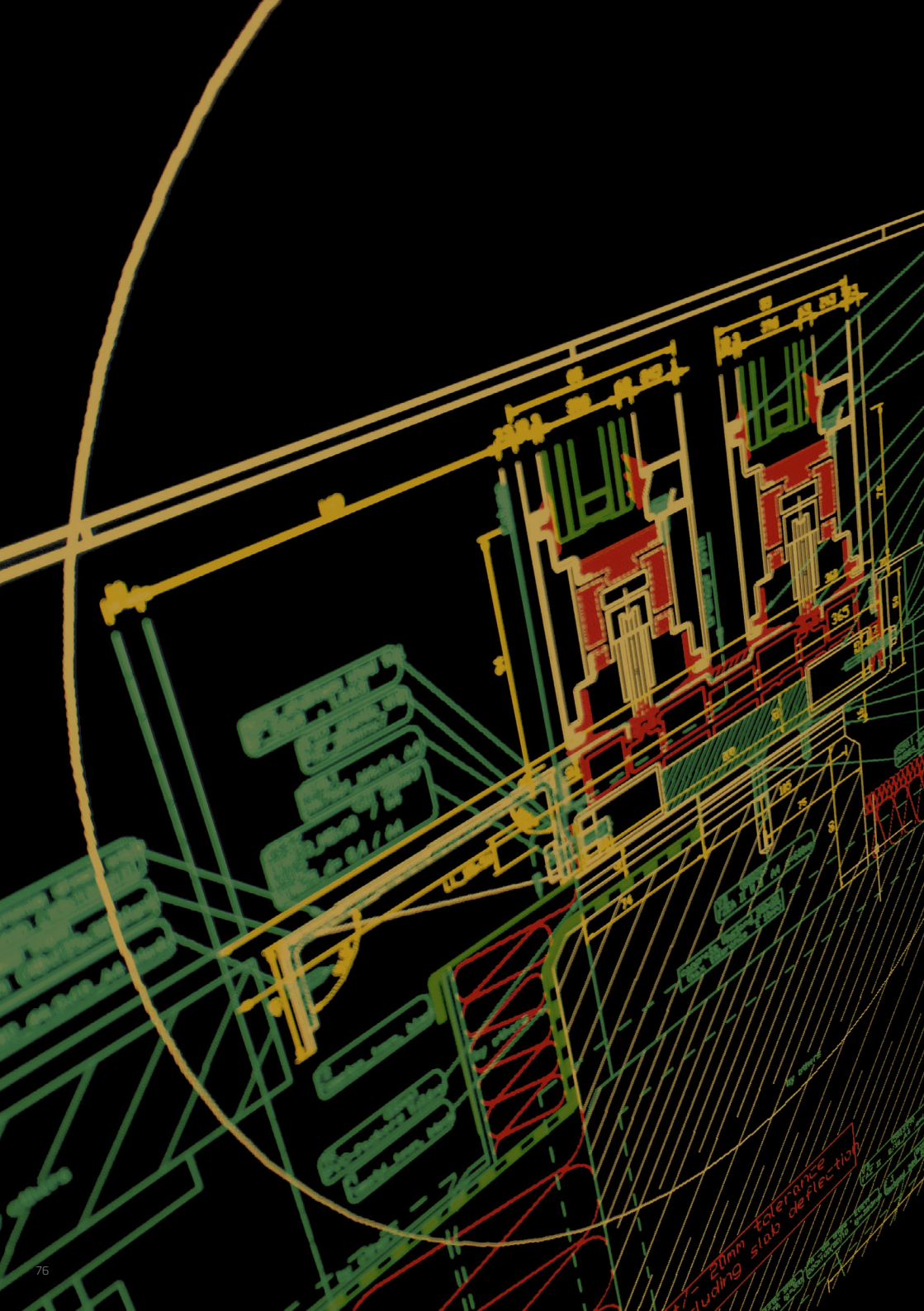


weld-on
Ø 13 mm





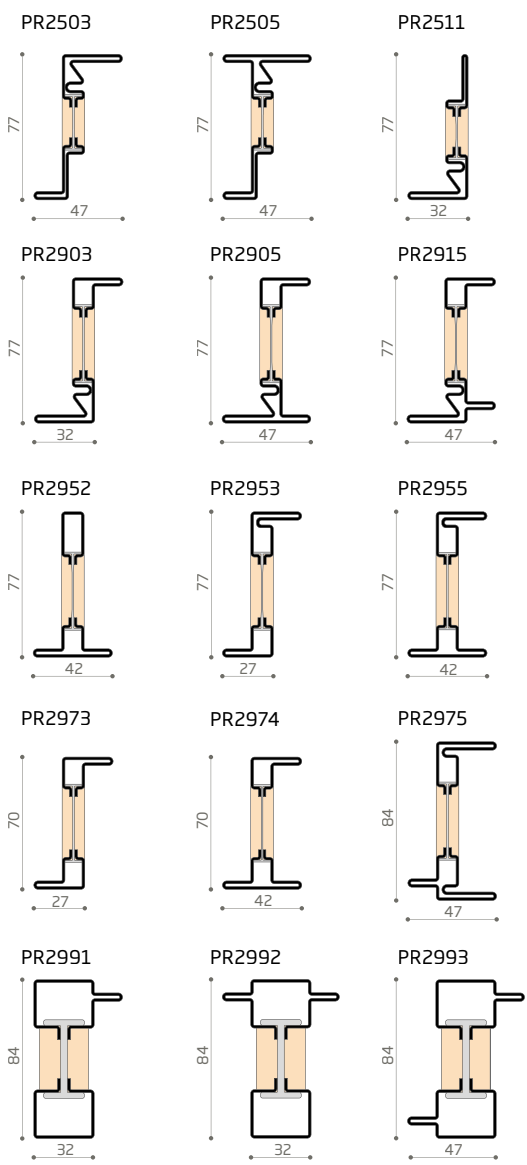


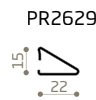
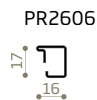
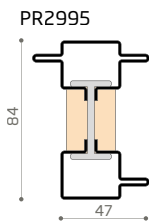
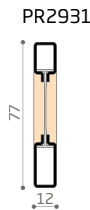
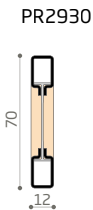
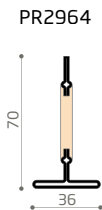
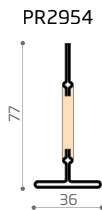
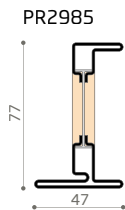
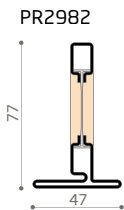
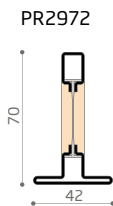
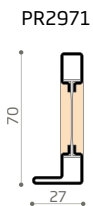
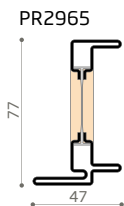
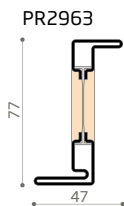
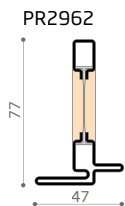
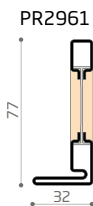
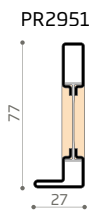
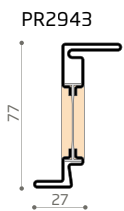
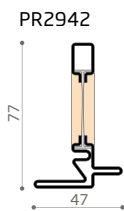
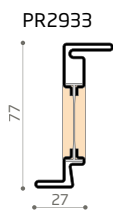
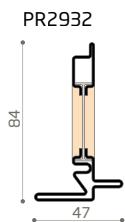
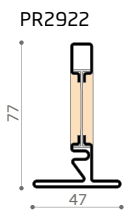
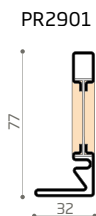
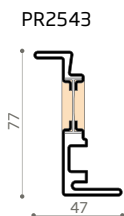
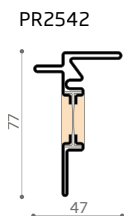
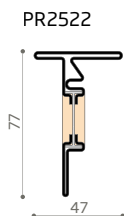
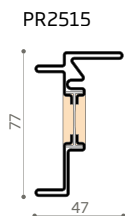
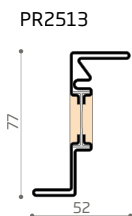


design together

the main hubs of MFOS2 systems
in technical drawings listed:
to define every detail of the door
or window, for the development
on a technical/execution
level of the project and for
the preliminary cost estimation

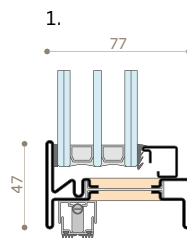
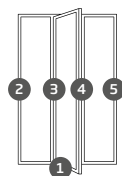
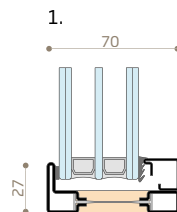
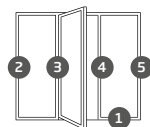
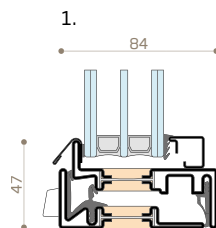
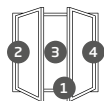
profiles and
glazing beads

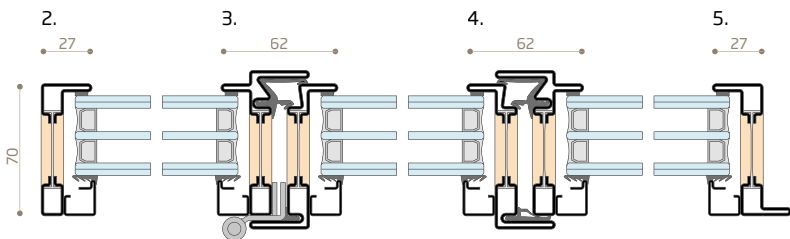
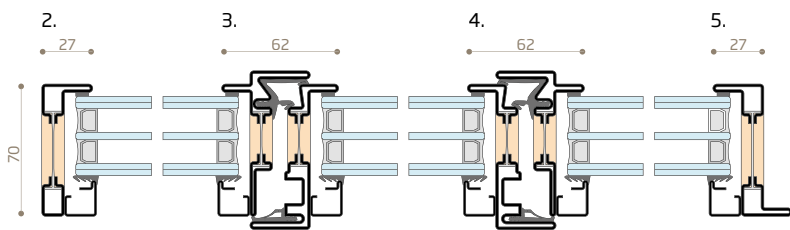
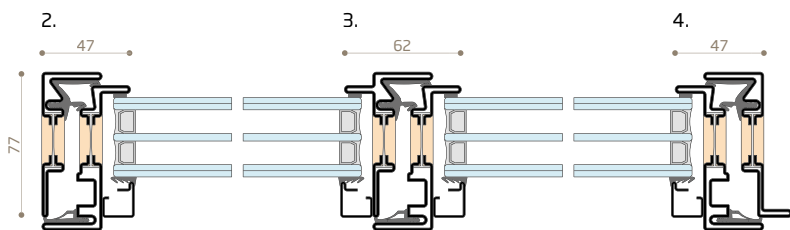




MFOS2 75

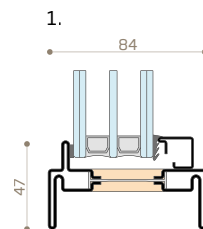
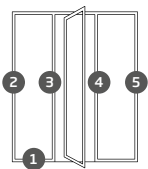
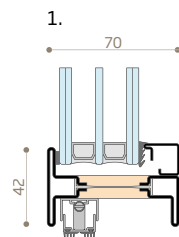
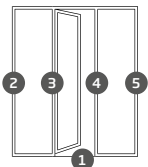
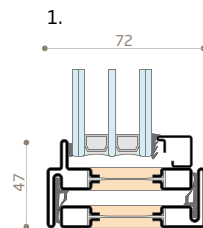
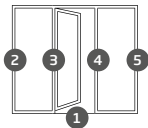
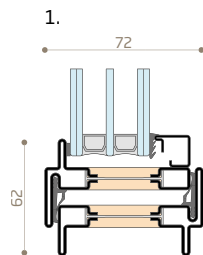
inward
opening
sections

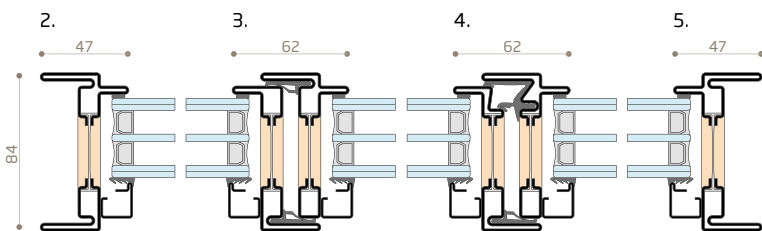
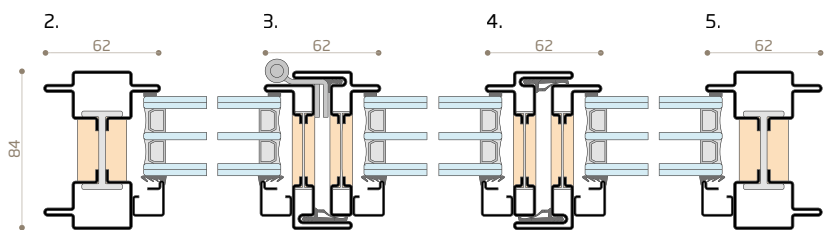
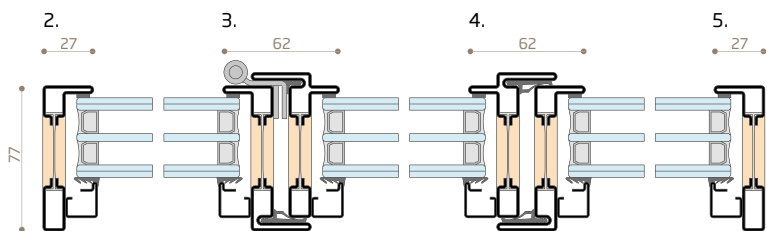
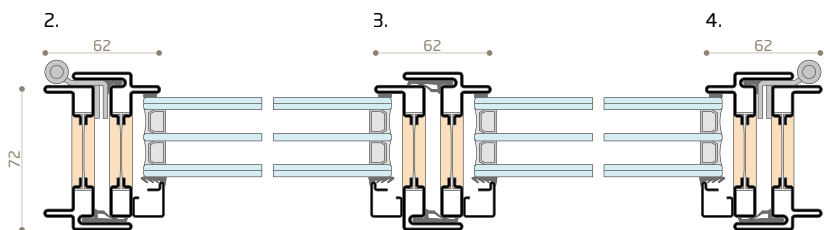




MFOS2 75

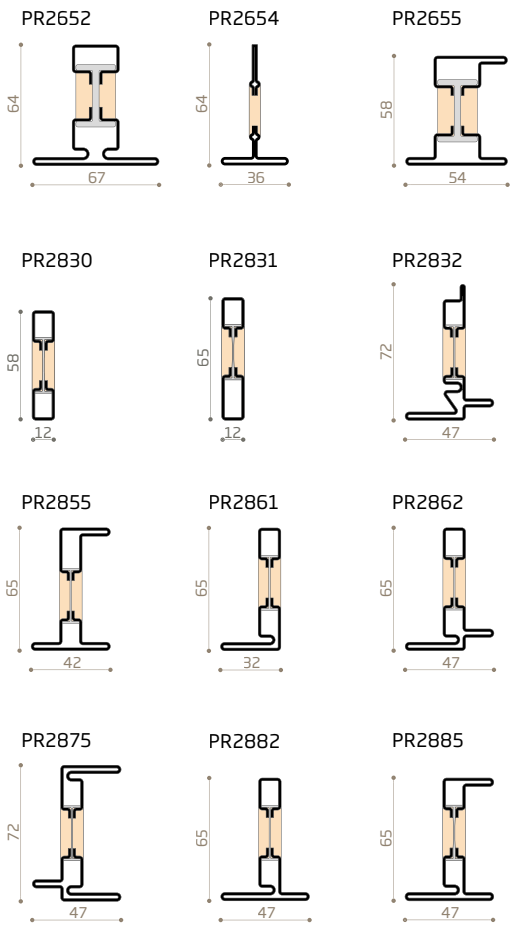
outward
opening
sections



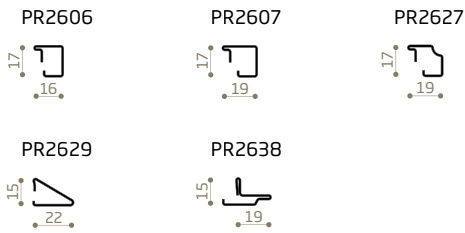


MFOS2 65

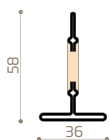
profiles



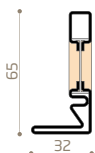
glazing beads



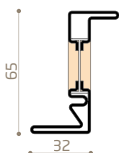
PR2664



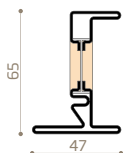
PR2801



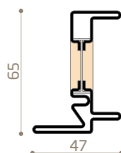
PR2803



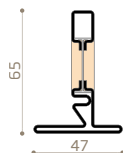
PR2805



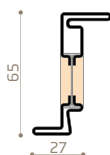
PR2815



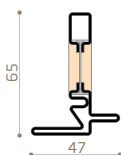
PR2822



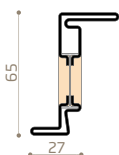
PR2833



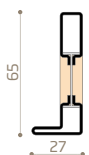
PR2842



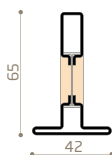
PR2843



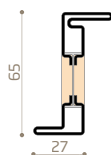
PR2851



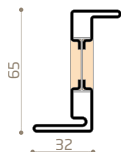
PR2852



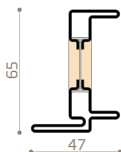
PR2853



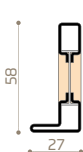
PR2863



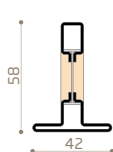
PR2865



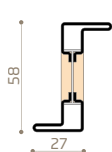
PR2871



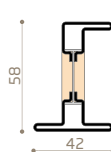
PR2872



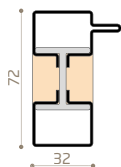
PR2873



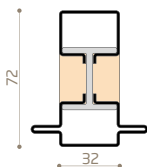
PR2874



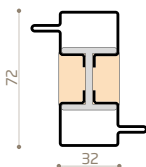
PR2891



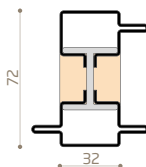
PR2892



PR2893

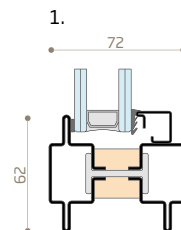
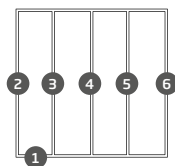
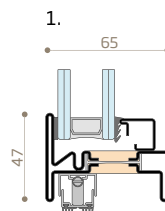
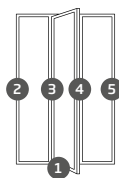
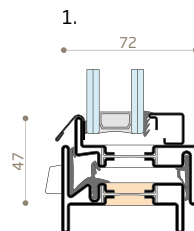
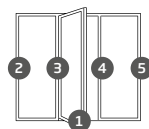
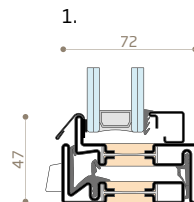
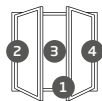


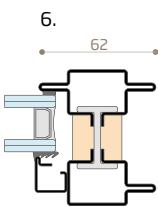
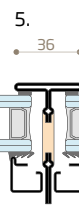
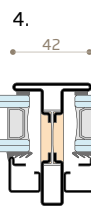
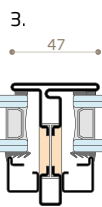
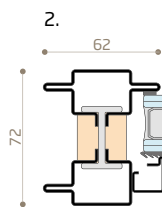
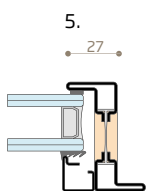
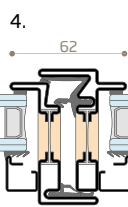
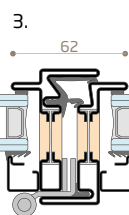
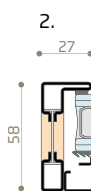
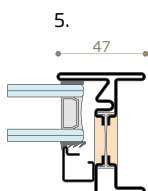
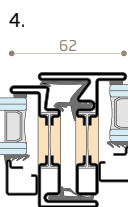
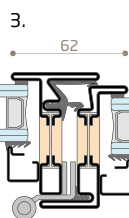
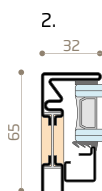
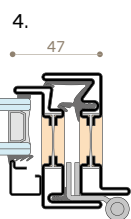
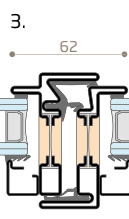
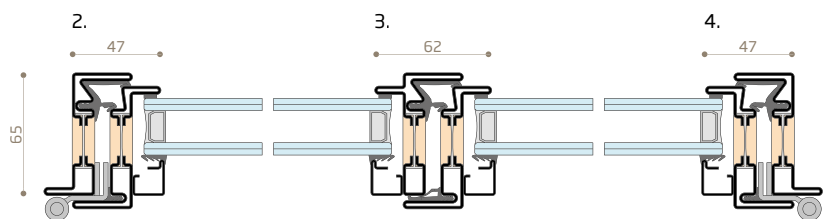
PR2895



MFOS2 65

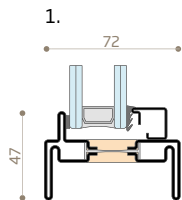
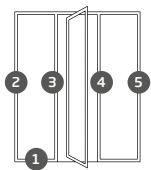
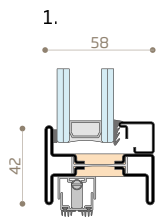
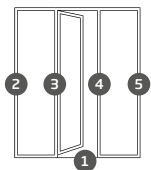
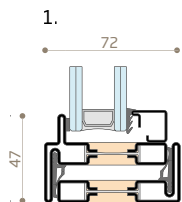
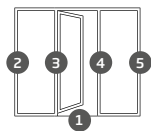
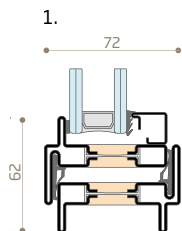
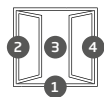
inward
opening and
fixed pane
sections

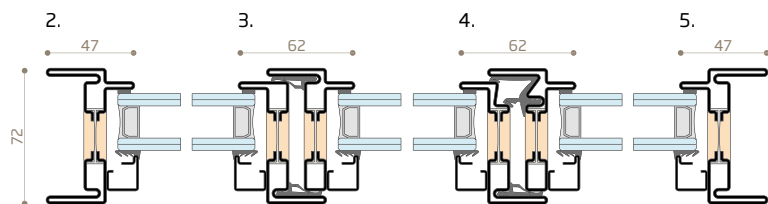
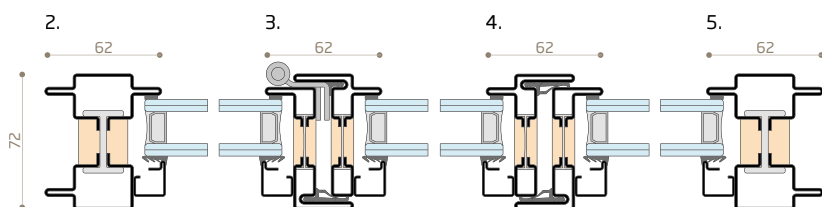
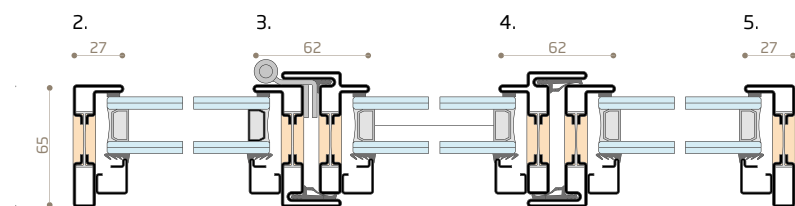
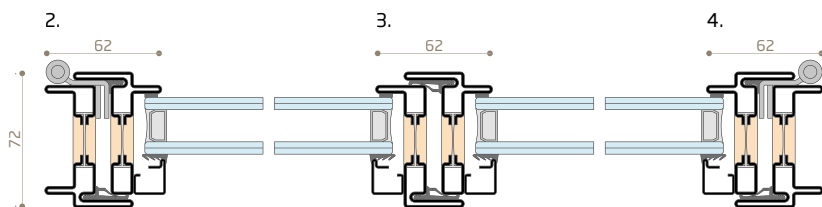




MFOS2 65

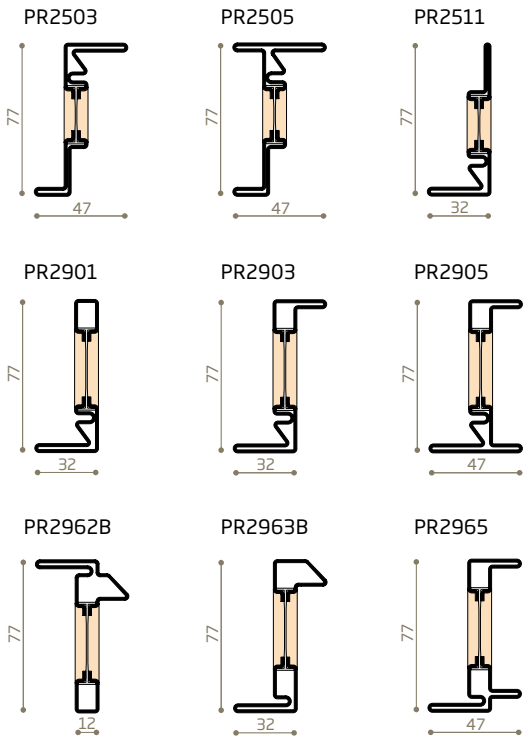
outward
opening
sections



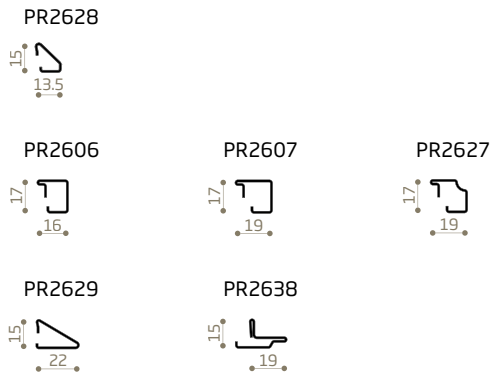


MFOS2 BV

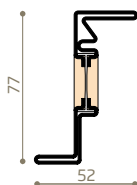
profiles



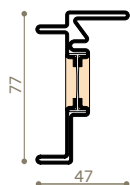
glazing beads



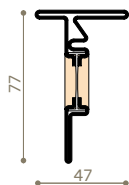
PR2513



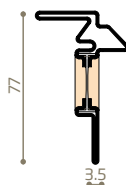
PR2515



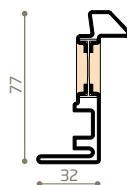
PR2522



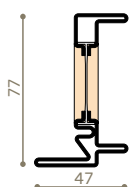
PR2542B



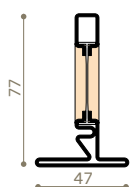
PR2543B



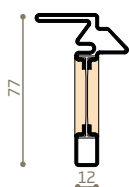
PR2915



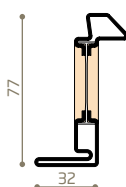
PR2922



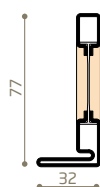
PR2942B



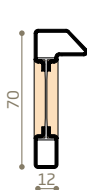
PR2943B



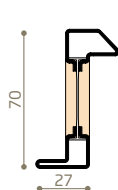
PR2961



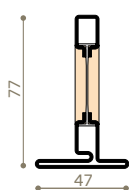
PR2971B



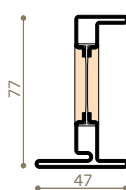
PR2973B



PR2982

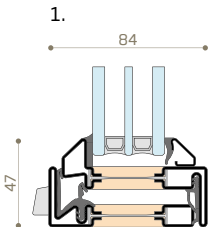
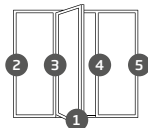
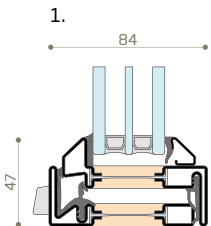
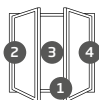
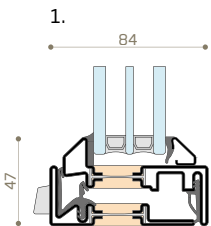
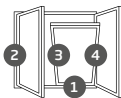
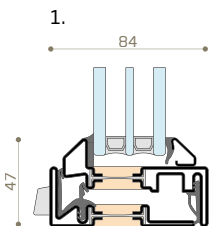


PR2985

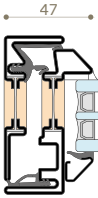


MFOS2 BV

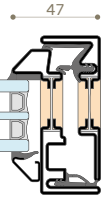
inward
opening
sections



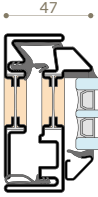
2.



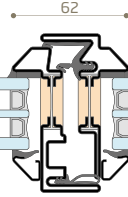
3.



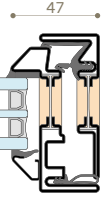
2.



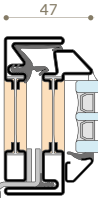
3.



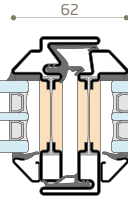
4.



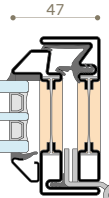
2.



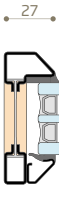
3.



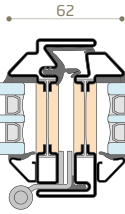
4.



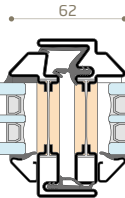
2.



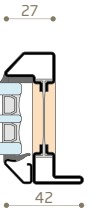
3.



4.

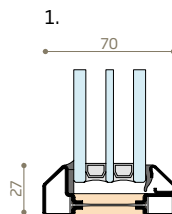
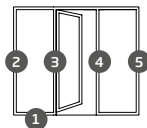
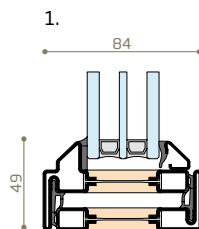
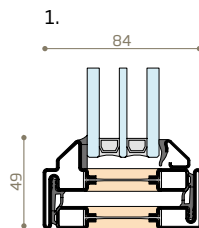
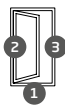


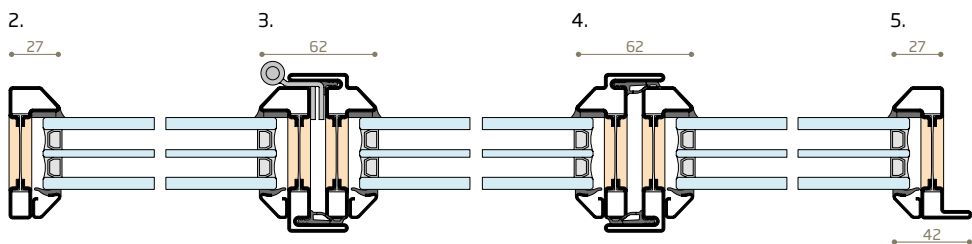
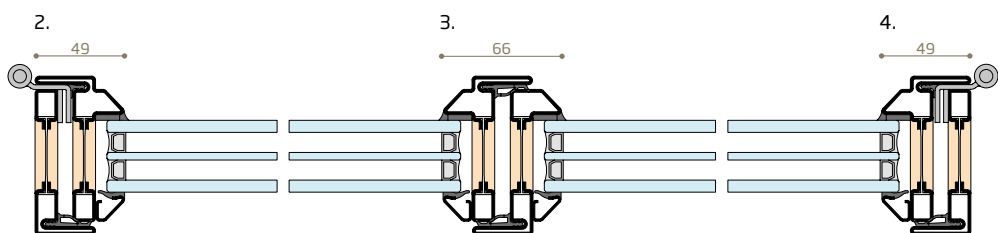
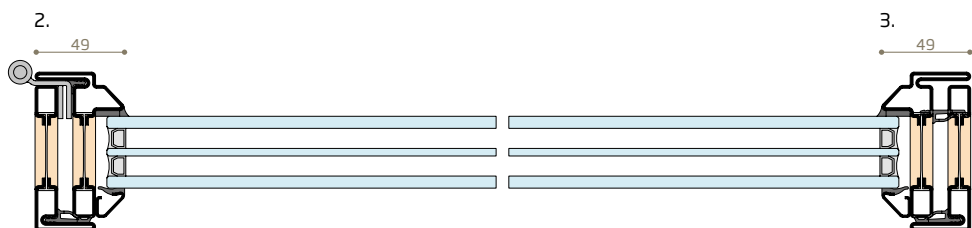
5.



MFOS2 BV

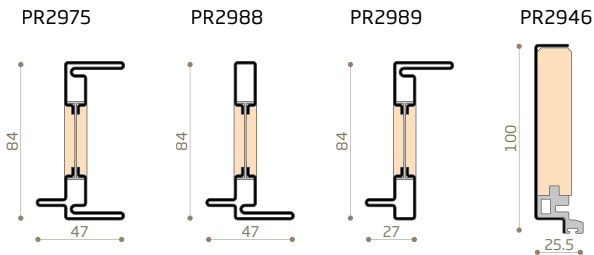
outward
opening
sections



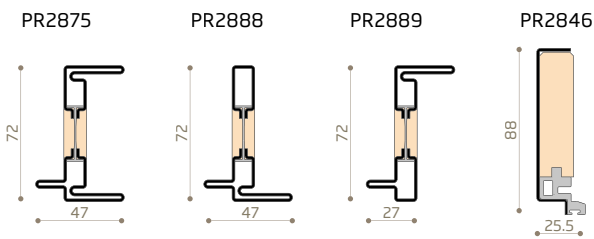


MFOS2 AS

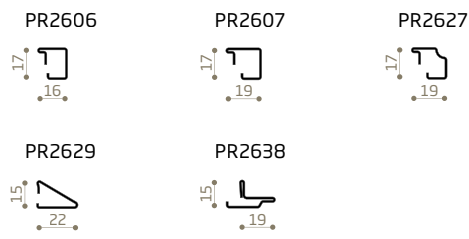
profiles
for IGU up
to 50 mm



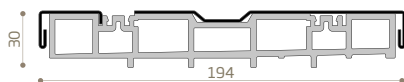
profiles
for IGU up
to 38 mm



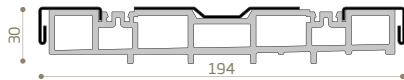
glazing beads



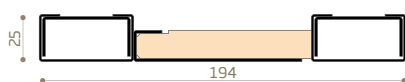
PR2983



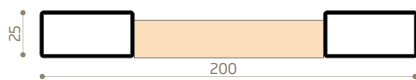
PR2984



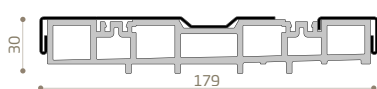
PR2986



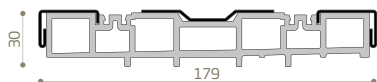
PR1195



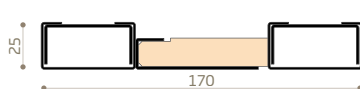
PR2883



PR2884



PR2886

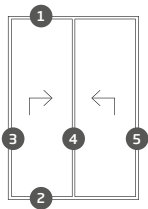


PR1195R

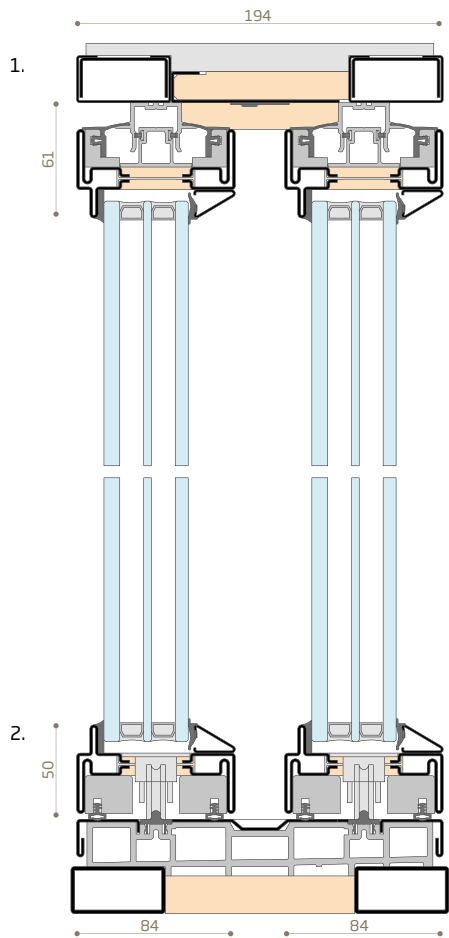


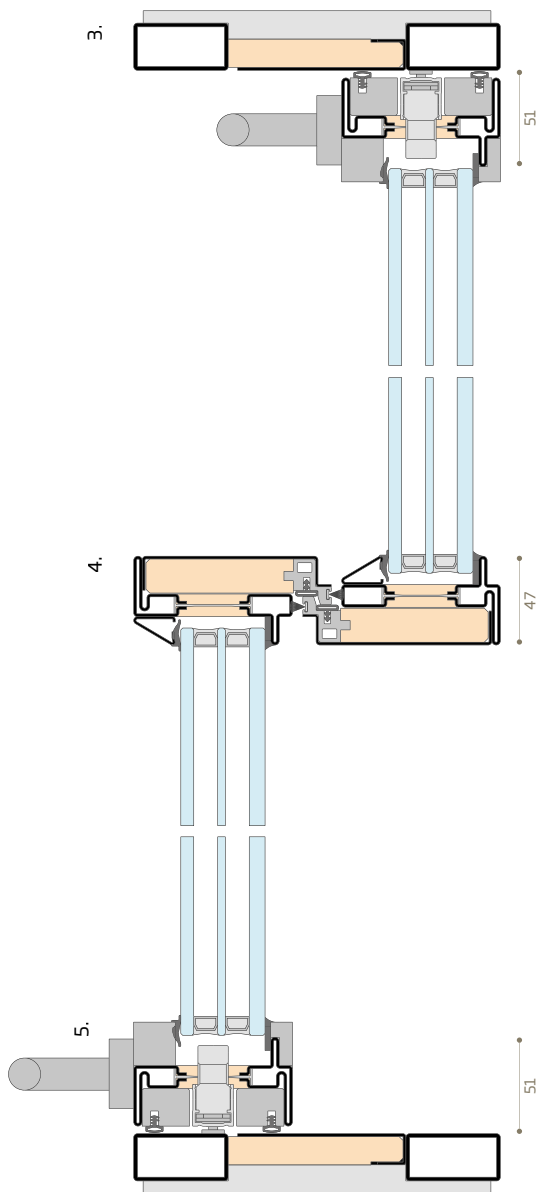
MFOS2 AS

two-sash
opening
sections



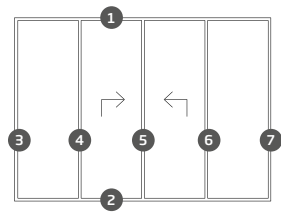
example for IGU
up to 50 mm



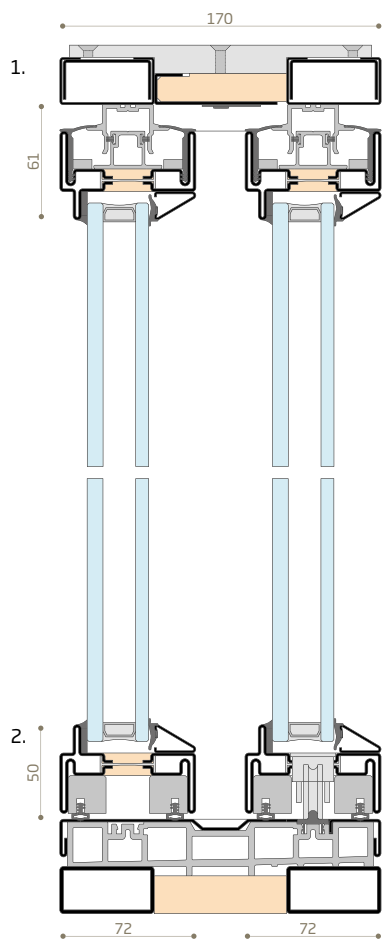


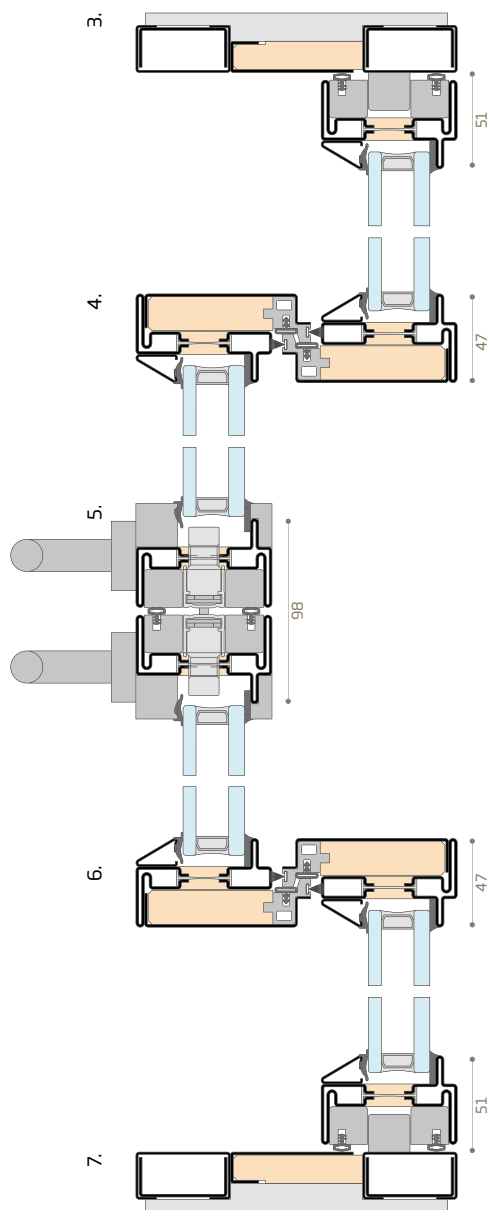
MFOS2 AS

four-sash
opening
sections



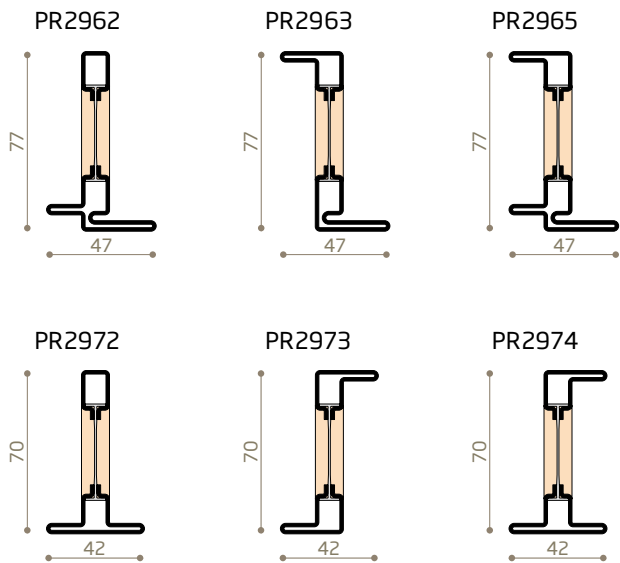
example for IGU
up to 38 mm



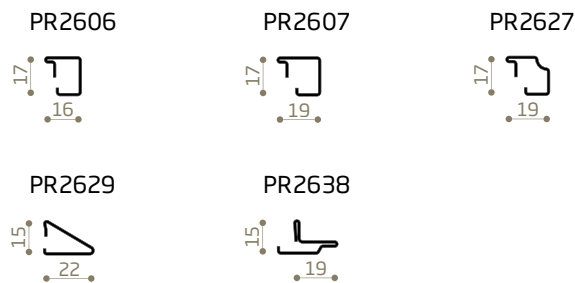


MFOS2 LB

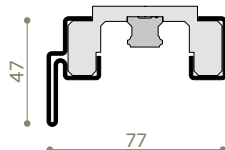
profiles



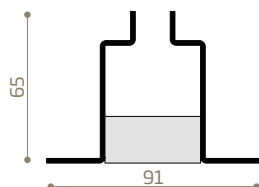
glazing beads



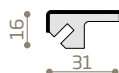
PR2927



PI2928



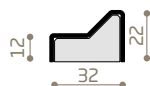
PR2929



PR2938



PR2939

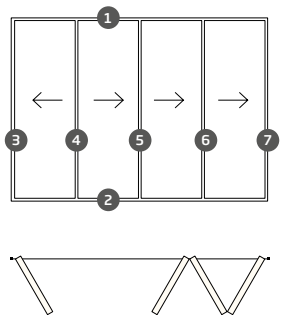


GU2926

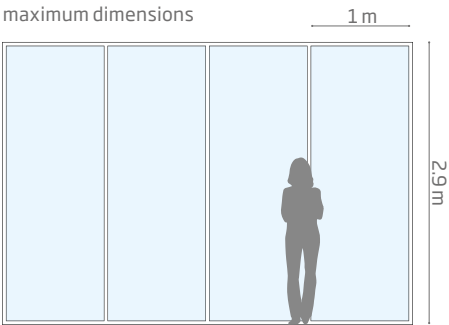


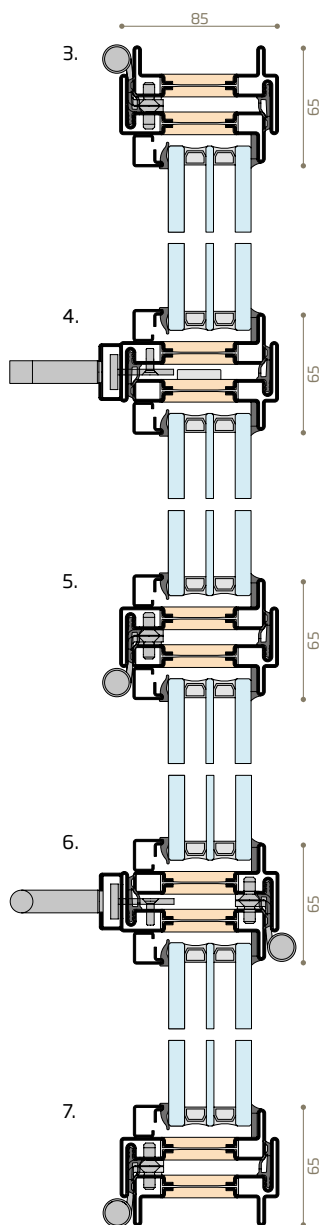
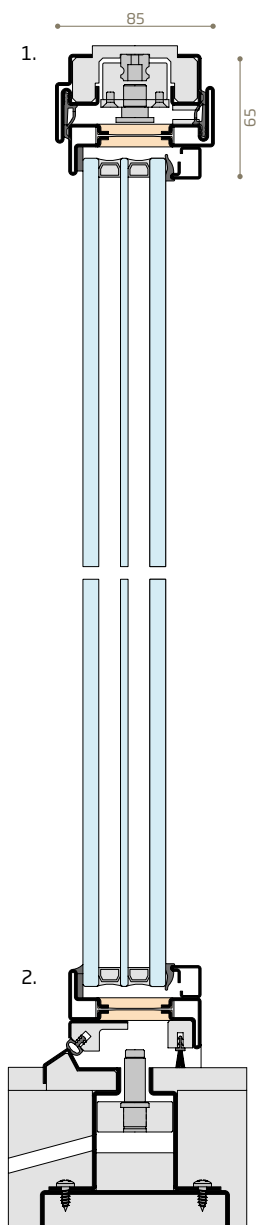
MFOS2 LB

inward
opening
sections



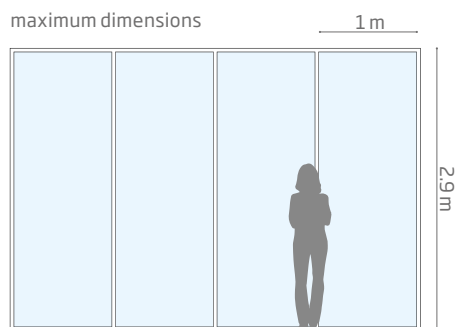
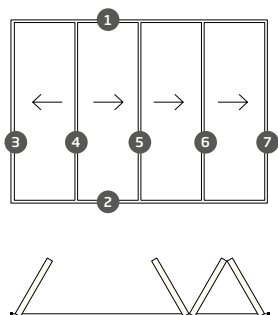
maximum dimensions

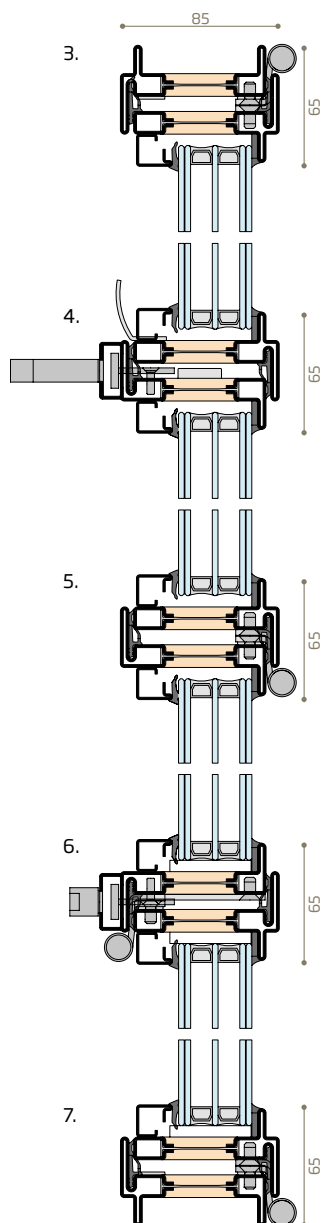
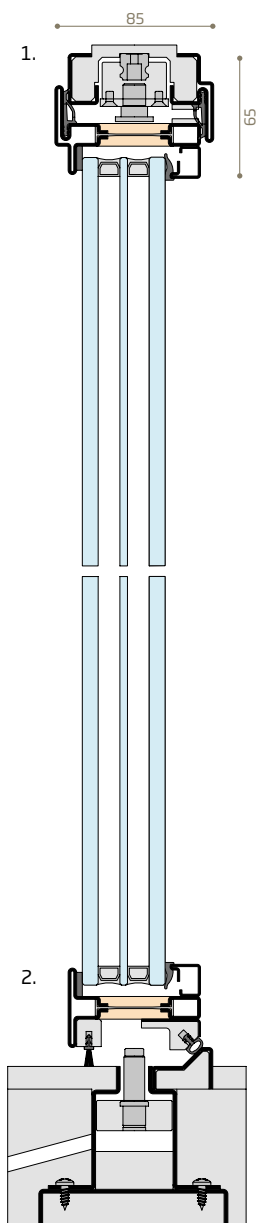




MFOS2 LB

inward
opening
sections

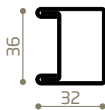




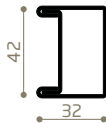
MFOS2 40

profiles

PR2424



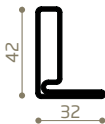
PR2425



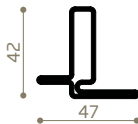
PR2430



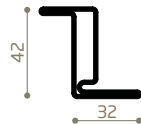
PR2461



PR2462



PR2463



glazing beads

PR2415



PR2416



PR2429



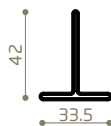
PR2431



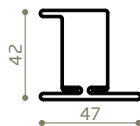
PR2451



PR2454



PR2455



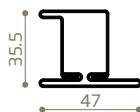
PR2464



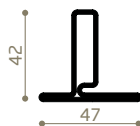
PR2471



PR2474

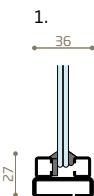
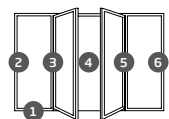
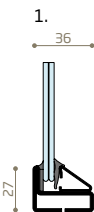
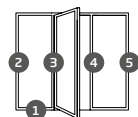
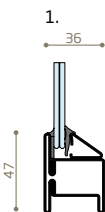
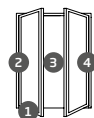
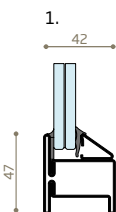


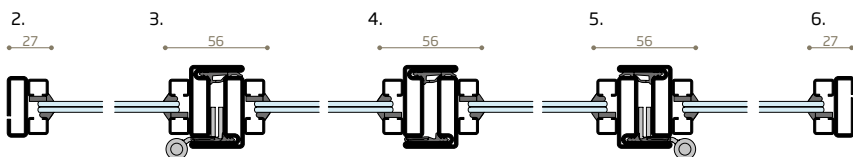
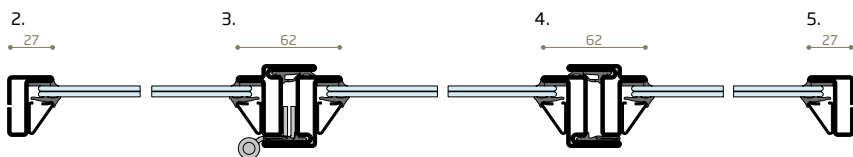
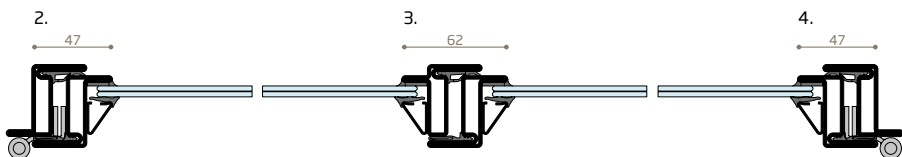
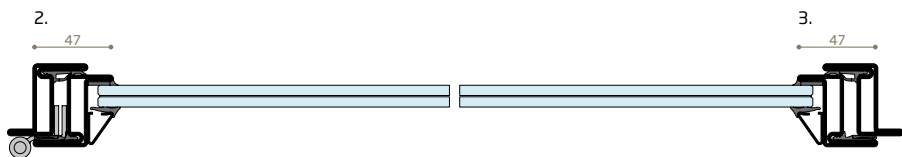
PR2482



MFOS2 40

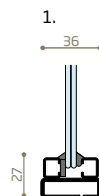
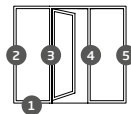
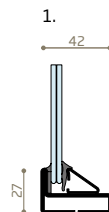
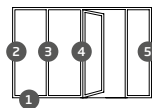
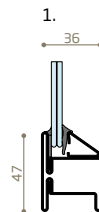
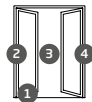
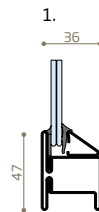
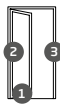
inward
opening
sections

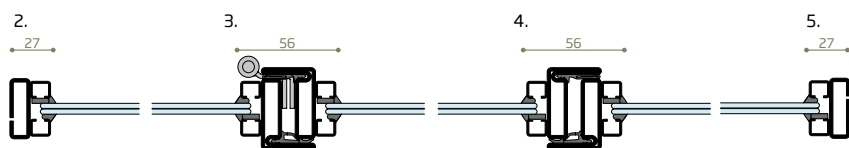
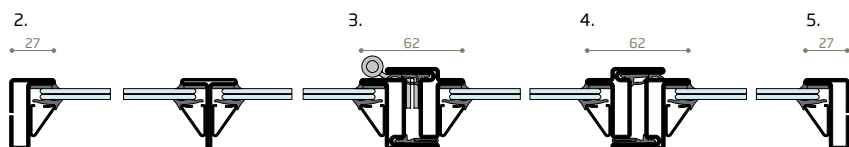
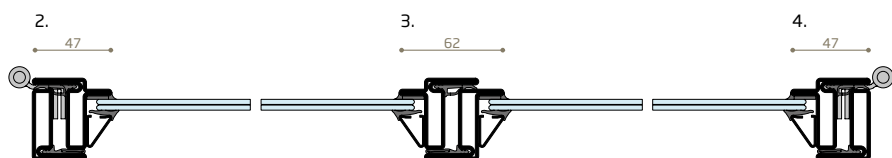
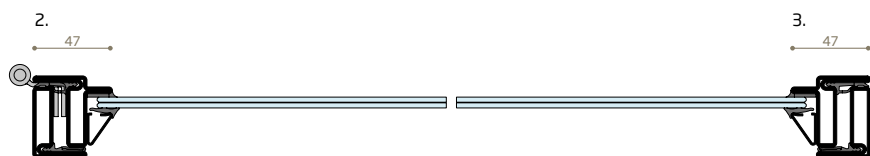




MFOS2 40

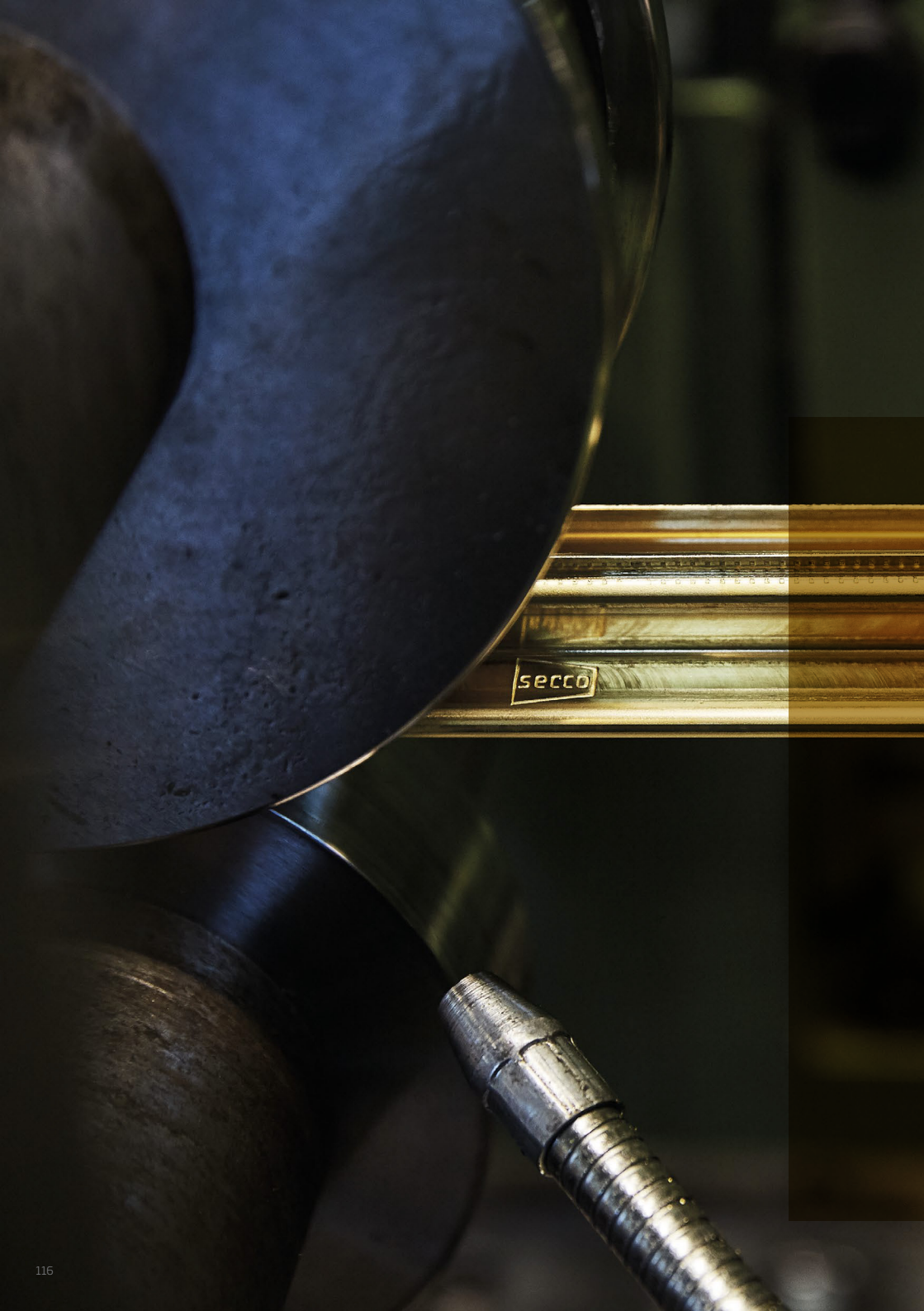
outward
opening
sections













BESPOKE & *Beautiful*

Let's talk



METALFORM™

www.metalform.uk

Metalform is a leader in manufacturing high quality steel and wrought iron products throughout Europe. We are a company with great pride in our products, with highly skilled fabricators and blacksmiths within modern production facilities. For over 20 years we have delivered steel and iron products of the highest quality to our clients all over Europe.

Metalform produces a complete range of architectural products in steel and wrought iron including windows, doors, partitions, gates, fences, railings, balconies and many other products for your homes and businesses.

Here to talk

Orion House
Barnhill
Stamford
PE9 2AE

sales@metalform.uk
projects@metalform.uk

+44 (0) 1780 437995

facebook.com/metalformeurope
[instagram @metalformgroup](https://instagram.com/metalformgroup)
linkedin.com/company/metalform-group
pin.it/61AyQIm